



精彩生活从头开始！

Wonderful Life From Head

植发针 **FUE PUNCH**



FUE/技术

▲ FUE Punch Overview

"FUE"技术是国际上一项革命性的植发技术。这项技术无须从供体区移植皮瓣或者使用缝合技术，因此可以避免供体区域的疤痕，并且可以进一步缩短恢复时间。特别要指出，"FUE"技术是一种通过采用手动或电动毛囊提取机用植发针（植发针的规格有:0.8mm、0.9mm、1.0mm、1.1mm 1.2mm）从脱发患者头发密集区钻取毛囊的最新方法。也是对毛囊侵害性最小的植发手术。亚洲人一般毛囊大小在0.8mm-0.9mm左右，欧美一般一般毛囊大小1.0mm-1.2mm左右)。我们根据毛囊大小选用植发针钻松毛囊，再用夹子把毛囊取出放在培植液中进行培育提高毛囊存活率。然后在患者脱发区钻取软组织留下空位植入培育好的毛囊。手术完成后，患者须清洗头发，为伤口消毒，严格按照医嘱服用抗生素和激素类物品，防止细菌感染

"FUE" technology is a revolutionary international hair transplant technology. This technique eliminates the need for graft flaps from the donor area or the use of suturing techniques, thereby avoiding scarring in the donor area and further reducing recovery time. In particular, the "FUE" technique is a technique of hair removal from hair loss areas by using a manual or electric hair follicle extractor with a hair shaft (specifications of hair shaft: 0.8mm, 0.9mm, 1.0mm, 1.1mm 1.2mm) The latest method of hair follicles. It is also the least hair follicle invasive surgery. Asian hair follicles generally 0.8mm-0.9mm in size, generally the size of the general European and American hair follicles 1.0mm-1.2mm or so). According to the size of hair follicles we choose hairpin hair drilling hair follicles, and then use the clip to remove the hair follicles in culture solution to cultivate to improve hair follicle survival rate. The soft tissue is then drilled into the hair loss area of the patient to leave well-placed hair follicles. After surgery, patients have to clean their hair and disinfect their wounds, taking antibiotics and hormones in strict accordance with doctor's orders to prevent bacterial infections.



植发针 FUE PUNCH
精彩生活从头开始！
Wonderful Life From Head

▲ FUE Punch Advantages

- 1、刀刃锋利。(使用轻松，减少患者痛苦！)
- 2、刀口壁厚只有0.1mm。(减少创伤加快康复！)
- 3、同心度好。(不会破坏毛囊组织！保证了头发存活量！)
- 4、硬度高光洁度好。(通过特殊表面涂层处理，增加硬度和光洁度，降低了磨擦系数！有效提高提取毛囊的数量，缩短手术的时间！)

- 1, Sharp blade. (Easy to use, reducing patient pain!)
- 2, The thickness of the blade wall is only 0.1mm. (Reduce trauma and speed up recovery!)
- 3, Good concentricity. (Will not damage the hair follicle tissue! Guaranteed hair survival!)
- 4, High hardness finish. (Through the special surface coating, increase the hardness and finish, lower the coefficient of friction! Effectively increase the number of hair follicles, shorten the operation time!)



800102

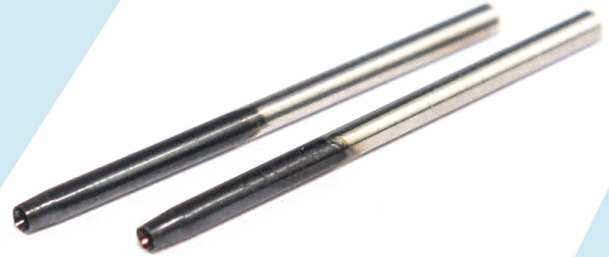
FUE PUNCH



根据需求请选择合适的植发针类型及尺寸，
使工作更加简便快速

Choose from suitable size and kinds
of FUE hair transplant needles .

Make the hair extraction process
simpler, smoother and quicker



▲ 选型参数 Selection Parameters

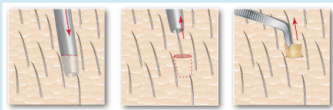
800102 FUE PUNCH (直杆型植发针Manual Punch)

800102 YK-CC FUE PUNCH

ID	OD	L	Material	Surface	Surface
内孔mm	柄径mm	总长mm	材质	表面处理	表面处理
0.80	1.5	25.5	SUS304	Polish	PVD
0.90	1.5	25.5	SUS304		
1.00	1.5	25.5	SUS304		
1.10	1.5	25.5	SUS304		
1.20	1.5	25.5	SUS304		

Order No.	Model	Specification	Quantity(pcs)
订购编号	型号	规格mm	一盒套装数量/支
800102-080	YK-CD-08	0.80	5
800102-090	YK-CD-09	0.90	5
800102-010	YK-CD-10	1.00	5
800102-110	YK-CD-11	1.10	5
800102-120	YK-CD-12	1.20	5

▲ 适用范围 Application



1. Androgenetic alopecia
2. Eyebrow transplant
3. Frontal hair line lowering or reconstruction
4. Available donor hair on the chest, back, shoulders, torso or legs.

800101

FUE PUNCH

FUE

FUE punch

根据需求请选择合适的植发针类型及尺寸，
使工作更加简便快速

Choose from suitable size and kinds
of FUE hair transplant needles .

Make the hair extraction process
simpler, smoother and quicker

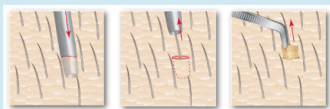


▲ 选型参数 Selection parameters

800101 FUE PUNCH (带头型植发针Motorized Punh)					
800101 YK-CC FUE PUNCH					
ID	OD	L	Material	Surface	Surface
内孔mm	柄径mm	总长mm	材质	表面处理	表面处理
0.80	2.3	36.75	SUS304	Polish	PVD
0.90	2.3	36.75	SUS304		
1.00	2.3	36.75	SUS304		
1.10	2.3	36.75	SUS304		
1.20	2.3	36.75	SUS304		

Order No.	Model	Specification	Quantity(pcs)
订购编号	型号	规格mm	一盒套装数量/支
800101-080	YK-CC-08	0.80	5
800101-090	YK-CC-09	0.90	5
800101-010	YK-CC-10	1.00	5
800101-110	YK-CC-11	1.10	5
800101-120	YK-CC-12	1.20	5

▲ 适用范围 Application



1. Androgenetic alopecia
2. Eyebrow transplant
3. Frontal hair line lowering or reconstruction
4. Available donor hair on the chest, back, shoulders, torso or legs.

QUALITY POLICY

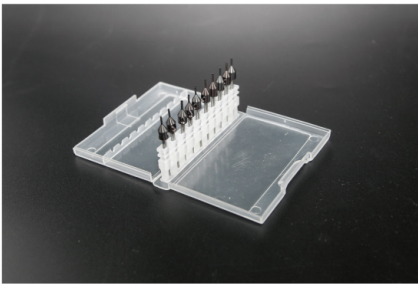
品质政策

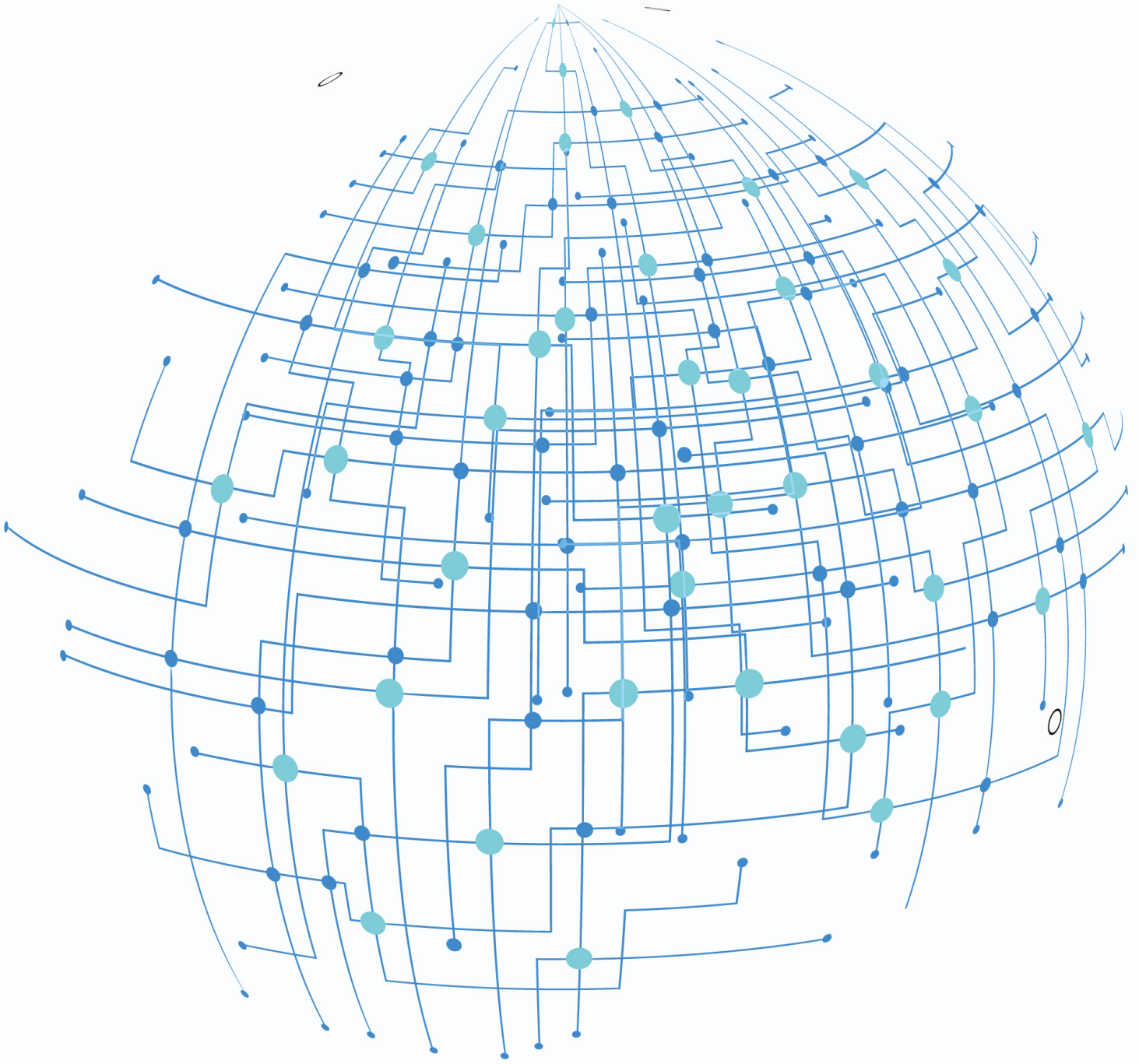
质量是企业立足之本，优质的产品是企业打入世界市场的强大武器。公司为了创造至优至尊的产品，严把加工过程的每一道关口，力求以一流的产品应对激烈的市场竞争。

Quality is based on the enterprise, high-quality products is a powerful weapon to enter the world market. The company in order to create supreme products, Strict every pass of the process and strive to first-class products to deal with fierce market competition.

PACKAGE

包装方式





精彩生活从头开始!

FUE 
FUE punch



FUE 
FUE punch

东莞市镒凯模具科技有限公司
YUKAI PRECISION IND CO.,LTD

Contact: 13827280793